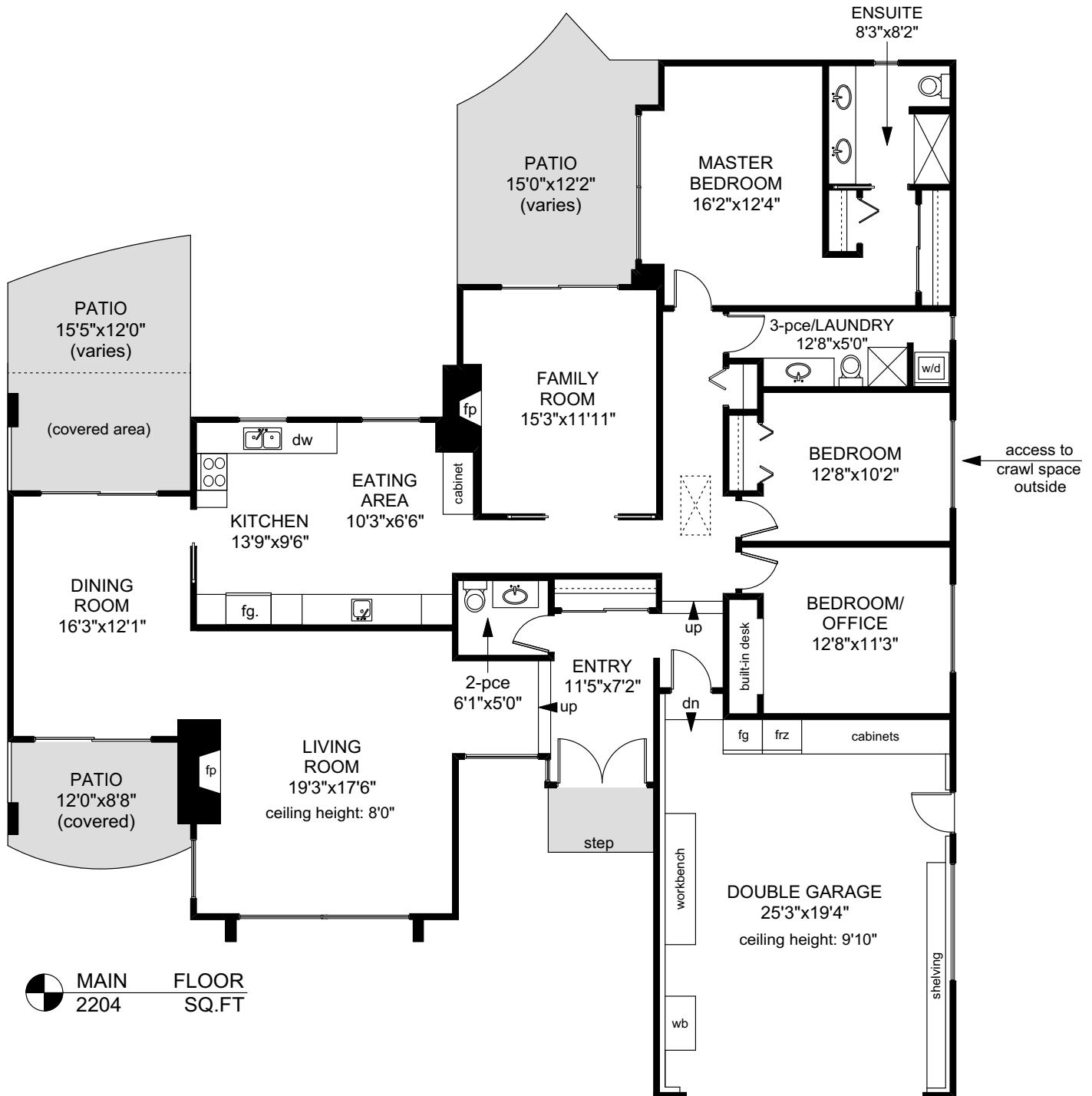

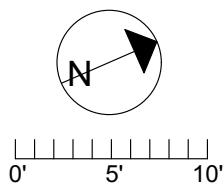


# 3000 MIDLAND ROAD



 MAIN FLOOR  
 2204 SQ.FT

	FINISHED SQ. FT.	UNFINISHED SQ. FT.	TOTAL SQ. FT.
MAIN	2204	0	2204
TOTAL	2204	0	2204
GARAGE	0	538	538
PATIOS	0	481	481



PREPARED FOR THE EXCLUSIVE USE OF  
 CHERYL BEJCAR & ASSOCIATES  
 OF NEWPORT REALTY

MEASURED ON: 09/24/18  
 DRAWING FILE: 17355

**Tafe Measure** VICTORIA, B.C.  
 Ph. 883.8894  
 www.tafemeasure.com