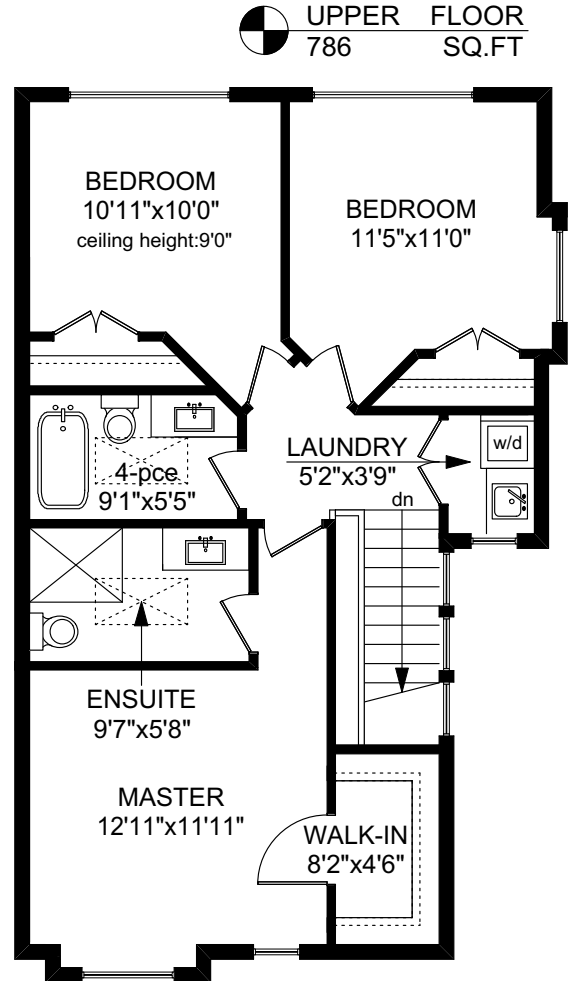
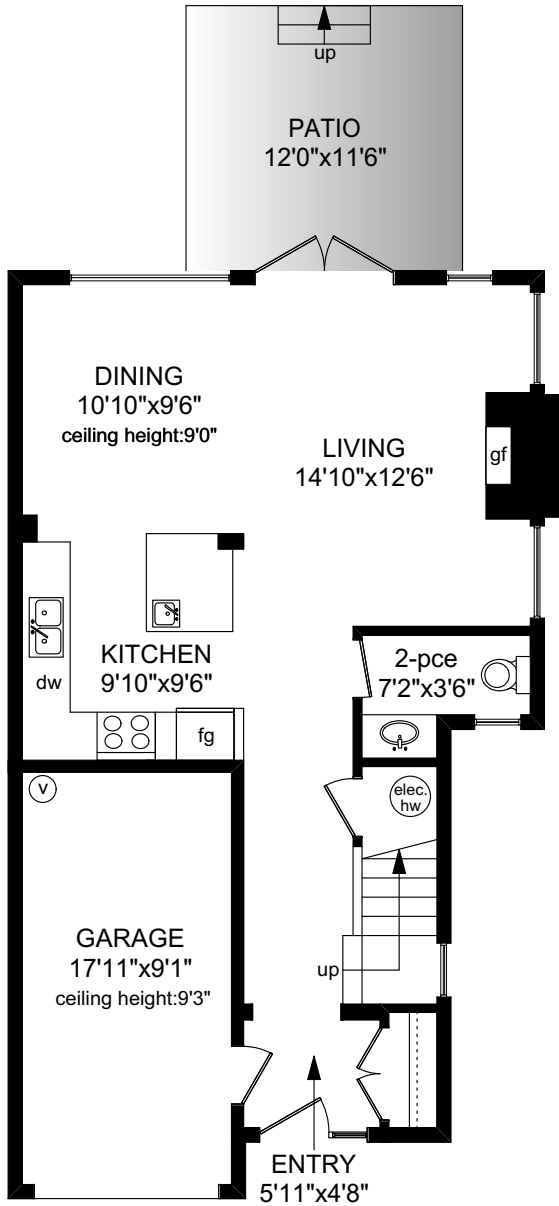
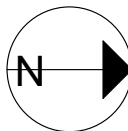


4 - 2622 SHELBOURNE STREET



MAIN FLOOR
624 SQ.FT

	FINISHED SQ. FT.	UNFINISHED SQ. FT.	TOTAL SQ. FT.
MAIN	624	0	624
UPPER	786	0	786
TOTAL	1410	0	1410
GARAGE	0	178	178
PATIO	0	138	138



PREPARED FOR THE EXCLUSIVE USE OF
CHERYL BEJCAR & ASSOCIATES
OF NEWPORT REALTY

MEASURED ON: 05/13/19
DRAWING FILE: 15908

Tafmeasure VICTORIA, B.C.
Ph. 883.8894
www.tafmeasure.com